

SEMA6A Antibody (C-term)
Purified Rabbit Polyclonal Antibody (Pab)
Catalog # AP2740b**Specification**

SEMA6A Antibody (C-term) - Product Information

Application	WB, IHC-P,E
Primary Accession	O9H2E6
Other Accession	O35464
Reactivity	Human
Predicted	Mouse
Host	Rabbit
Clonality	Polyclonal
Isotype	Rabbit IgG
Antigen Region	998-1028

SEMA6A Antibody (C-term) - Additional Information**Gene ID** 57556**Other Names**

Semaphorin-6A, Semaphorin VIA, Sema VIA, Semaphorin-6A-1, SEMA6A-1, SEMA6A, KIAA1368, SEMAQ

Target/Specificity

This SEMA6A antibody is generated from rabbits immunized with a KLH conjugated synthetic peptide between 998-1028 amino acids from the C-terminal region of human SEMA6A.

Dilution

WB~~1:1000

IHC-P~~1:10~50

E~~Use at an assay dependent concentration.

Format

Purified polyclonal antibody supplied in PBS with 0.09% (W/V) sodium azide. This antibody is purified through a protein A column, followed by peptide affinity purification.

Storage

Maintain refrigerated at 2-8°C for up to 2 weeks. For long term storage store at -20°C in small aliquots to prevent freeze-thaw cycles.

Precautions

SEMA6A Antibody (C-term) is for research use only and not for use in diagnostic or therapeutic procedures.

SEMA6A Antibody (C-term) - Protein Information**Name** SEMA6A

Synonyms KIAA1368, SEMAQ

Function Cell surface receptor for PLXNA2 that plays an important role in cell-cell signaling. Required for normal granule cell migration in the developing cerebellum. Promotes reorganization of the actin cytoskeleton and plays an important role in axon guidance in the developing central nervous system. Can act as repulsive axon guidance cue. Has repulsive action towards migrating granular neurons. May play a role in channeling sympathetic axons into the sympathetic chains and controlling the temporal sequence of sympathetic target innervation.

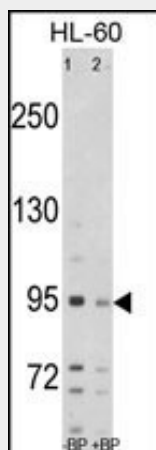
Cellular Location

Cell membrane; Single-pass type I membrane protein

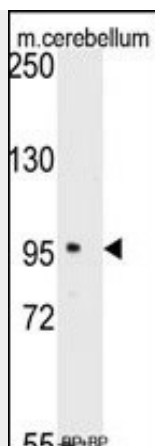
SEMA6A Antibody (C-term) - Protocols

Provided below are standard protocols that you may find useful for product applications.

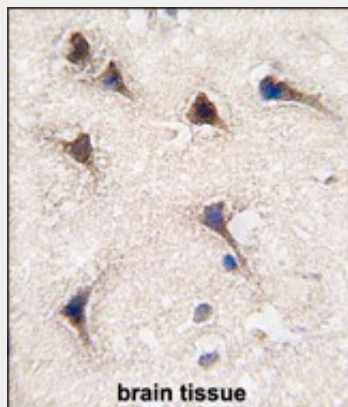
- [Western Blot](#)
- [Blocking Peptides](#)
- [Dot Blot](#)
- [Immunohistochemistry](#)
- [Immunofluorescence](#)
- [Immunoprecipitation](#)
- [Flow Cytometry](#)
- [Cell Culture](#)

SEMA6A Antibody (C-term) - Images

Western blot analysis of SEMA6A Antibody (C-term) Pab (Cat. #AP2740b) pre-incubated without(lane 1) and with(lane 2) blocking peptide in HL-60 cell line lysate. SEMA6A (arrow) was detected using the purified Pab.



Western blot analysis of anti-SEMA6A Antibody (C-term)(Cat.#AP2740b) pre-incubated with(right lane) and without(left lane) blocking peptide in mouse cerebellum tissue lysate. SEMA6A (arrow) was detected using the purified Pab.



Formalin-fixed and paraffin-embedded human brain tissue reacted with SEMA6A antibody (C-term) (Cat.#AP2740b), which was peroxidase-conjugated to the secondary antibody, followed by DAB staining. This data demonstrates the use of this antibody for immunohistochemistry; clinical relevance has not been evaluated.

SEMA6A Antibody (C-term) - Background

SEMA6A can act as repulsive axon guidance cues. It may play a role in channeling sympathetic axons into the sympathetic chains and controlling the temporal sequence of sympathetic target innervation.

SEMA6A Antibody (C-term) - References

Prislei,S., Mol. Cancer Ther. 7 (1), 233-241 (2008)
Katoh,M., Int. J. Mol. Med. 20 (3), 405-409 (2007)
Gautier,G., Am. J. Pathol. 168 (2), 453-465 (2006)

SEMA6A Antibody (C-term) - Citations

- [The extracellular SEMA domain attenuates intracellular apoptotic signaling of semaphorin 6A in lung cancer cells.](#)